

WA Monthly Swing Service Market Outcomes

March-2018



The following table provides the information on the operation of the Swing Service market on the North Metro and South Metro sub-networks over a 13 month rolling window.

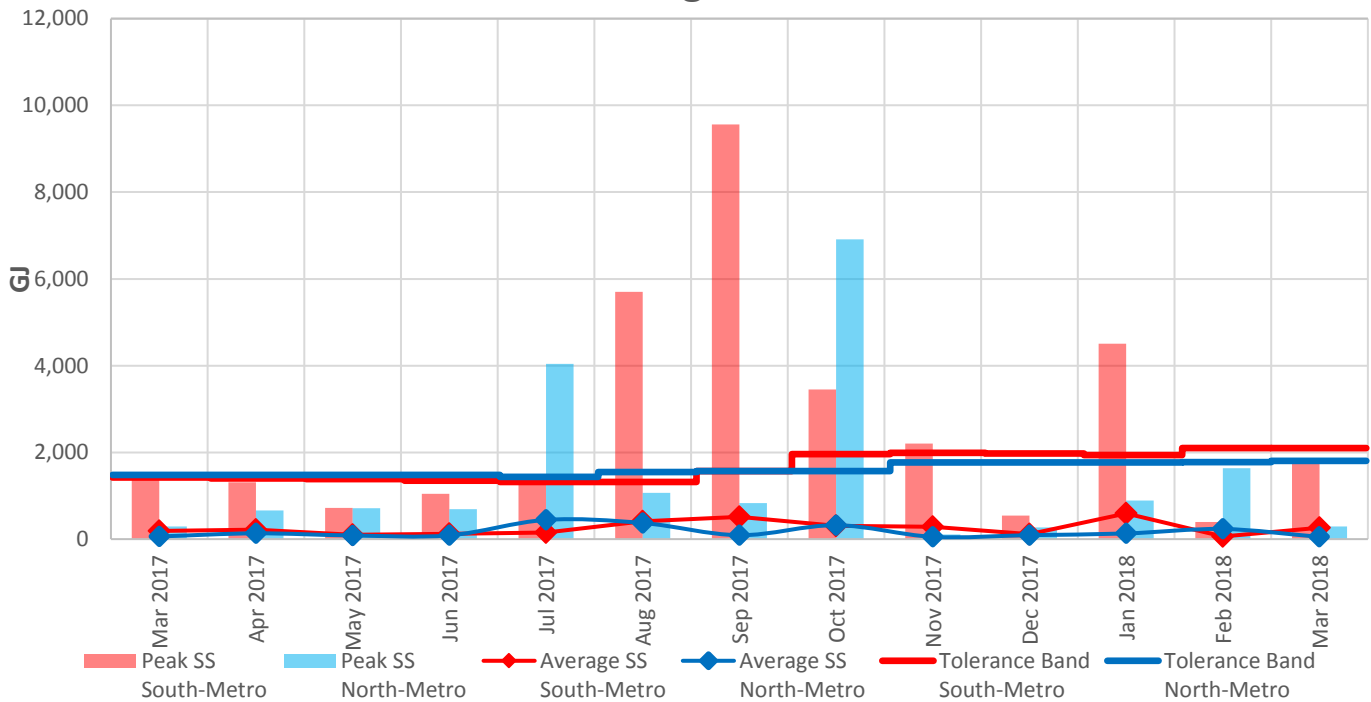
Month	Metro-South Sub-Network		Metro-North Sub-Network	
	Peak SS South-Metro	Average SS South-Metro	Peak SS North-Metro	Average SS North-Metro
March 2017	1,468	192	290	62
April 2017	1,313	216	663	133
May 2017	721	98	711	84
June 2017	1,042	124	694	87
July 2017	1,453	151	4,038	444
August 2017	5,704	411	1,069	372
September 2017	9,563	511	828	90
October 2017	3,449	305	6,913	321
November 2017	2,204	288	107	53
December 2017	543	114	273	92
January 2018	4,502	593	891	131
February 2018	393	61	1,633	234
March 2018	1,755	261	293	52
Average	Since March 2016	189	2-year	227

North Metro Average and peak Swing Service volumes in the North Metro sub-network were at relatively low levels for the month of March 2018, with the exception of a Swing Service spike for gas day 03/03/2018.

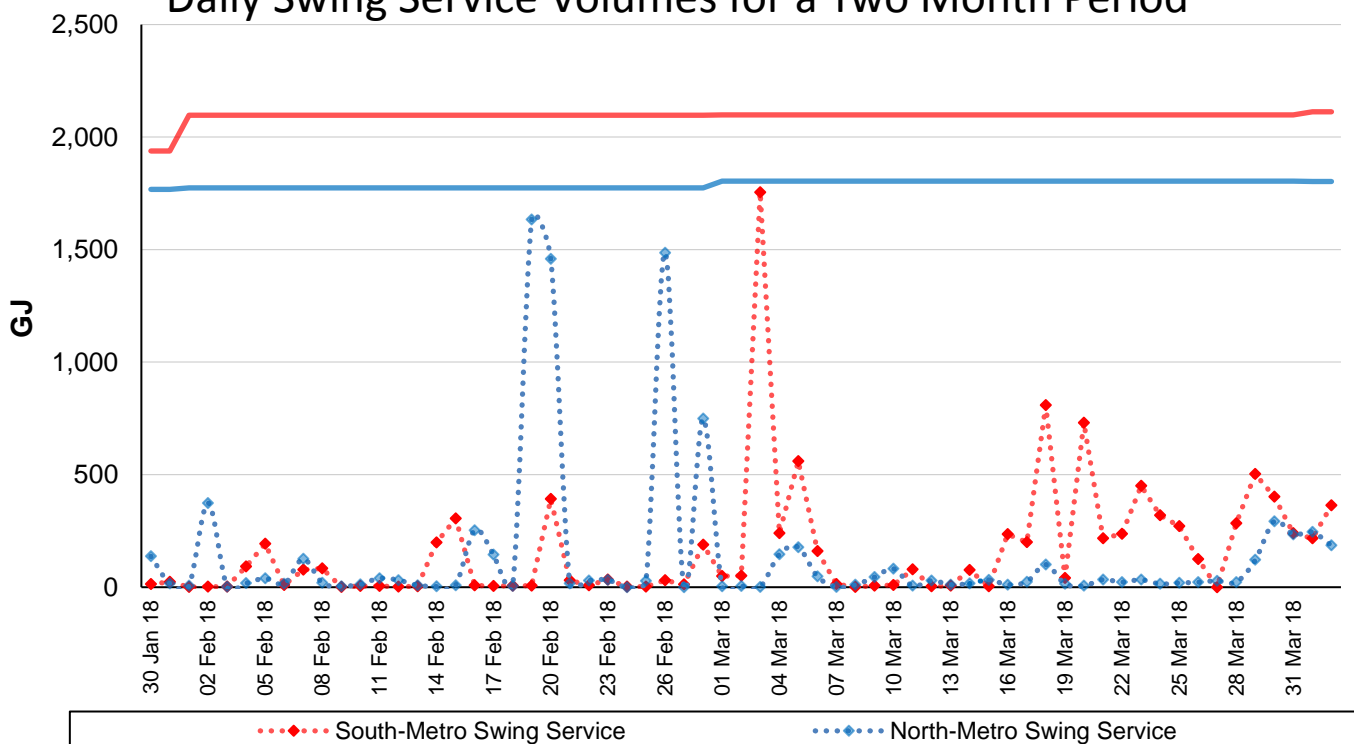
- For gas day 03/03/2018, APA investigated the Swing Service spike and identified this as due to a station trip. No notice under clause 255 of the WA Retail Market Procedures was sent as it was within the shortfall threshold specified in the WA Retail Market Procedures based on the materiality test.

South Metro Average and peak Swing Service volumes in the South Metro sub-network were at near normal levels for the month of March 2018.

13 Month Swing Service Results



Daily Swing Service Volumes for a Two Month Period



Terms:

- Peak SS means the maximum amount of Swing Service recorded on a day during that month.
- Average SS means the average amount of Swing Service for any day in that month.
- Peak Trend is the linear trend of the Peak SS data, using the least squares method.
- Average Trend is the linear trend of the Average SS data, using the least squares method.
- Tolerance Band is a marker – AEMO will investigate and report on any Swing Service spikes that are larger than the Tolerance Band. The Tolerance Band is defined as a volume equal to the mean amount of Swing Service over the last 2 years plus 3 standard deviations.