

<b>Test Report No.:</b> 19301194 001		Page 1 of 9	
<i>Prüfbericht - Nr.:</i>		Seite 1 von 9	
<b>Client:</b> <i>Auftraggeber:</i>	Austeknis Pty. Ltd. 7 Seaview Rd, Lynton, SA 5062, Australia		
<b>Test item:</b> <i>Gegenstand der Prüfung</i>	LED Luminaire		
<b>Identification:</b> <i>Bezeichnung:</i>	KLE – 126S – 11L KLE – 126S – 19L	<b>Serial No.:</b> <i>Serien-Nr.:</i>	N/A
<b>Receipt No.:</b> <i>Wareneingangs-Nr.:</i>	1113006605	<b>Date of receipt:</b> <i>Eingangsdatum:</i>	02/12/2013
<b>Condition of test item at delivery:</b> <i>Zustand des Prüfgegenstandes bei Anlieferung:</i>	Production sample		
<b>Testing location:</b> <i>Prüfart:</i>	TÜV Rheinland Australia Pty. Ltd. 182 Dougharty Road, Heidelberg West, VIC 3081, Australia		
<b>Test specification:</b> <i>Prüfgrundlage:</i>	-		
<b>Test Result:</b> <i>Prüfergebnis</i>	The item was supplied for results only with no compliance limits.		
<b>Testing Laboratory/</b> <i>Prüflaboratorium:</i>	TÜV Rheinland Australia Pty. Ltd. 182 Dougharty Road, Heidelberg West, VIC 3081, Australia		
<b>Compiled by/ zusammengestellt:</b>		<b>Reviewed by/kontrolliert:</b>	
07/01/2014	Blagoja Lazovski	09/01/2014	Billy Chu
<i>Datum</i> Date	<i>Name</i> Name	<i>Unterschrift</i> Signature	<i>Unterschrift</i> Signature
<b>Other Aspects/ Sonstiges:</b>			
- Power consumption measurement at rated voltage for AEMO (Australian Energy Market Operator) at lab condition (Ambient 20±5°C, Relative Humidity 45–75%)			
<b>Abkürzungen:</b>	P(ass) = entspricht Prüfgrundlage F(ail) = entspricht nicht Prüfgrundlage N/A = nicht anwendbar N/T = nicht getestet	<b>Abbreviations:</b>	P(ass) = passed F(ail) = failed N/A = not applicable N/T = not tested
<b>This test report relates to the a. m. test sample. Without permission of the test center this test report is not permitted to be duplicated in extracts. This test report does not entitle to carry any safety mark on this or similar products.</b>			
Dieser Prüfbericht bezieht sich nur auf das o.g. Prüfmuster und darf ohne Genehmigung der Prüfstelle nicht auszugsweise vervielfältigt werden. Dieser Bericht berechtigt nicht zur Verwendung eines Prüfzeichens.			

Revision 5.0

Accredited for compliance  
with ISO/IEC 17025  
Technical Competence



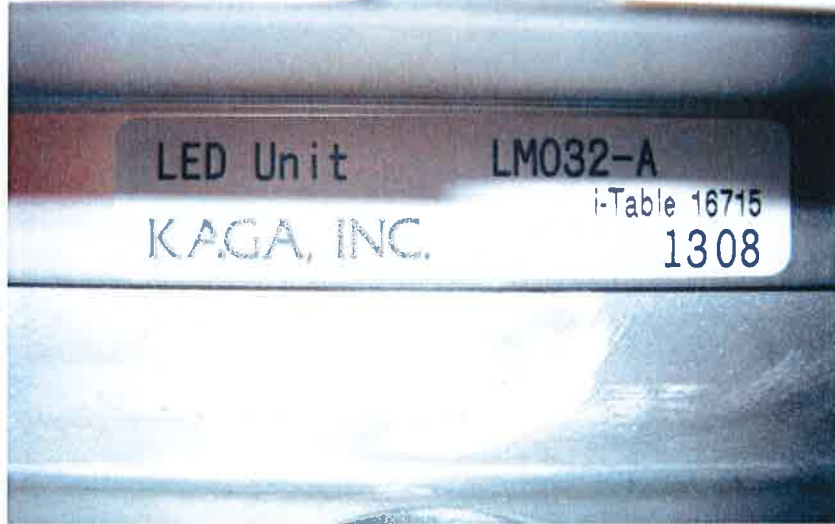
<b>Test Report</b>				
<b>Test item particulars:</b>				
KLE – 126S – 11L	Length: 535mm	Width: 225mm	Height: 130mm	Mass: 4.65kg
KLE – 126S – 19L	Length: 535mm	Width: 225mm	Height: 130mm	Mass: 4.65kg
<b>General remarks:</b>				
<ol style="list-style-type: none"> <li>1. This report shall not be reproduced, except in full.</li> <li>2. Details in test data / test plan no. 1113006605.</li> <li>3. Reporting of results herein is in accordance with NATA recommendations taking into account U of M.               <ol style="list-style-type: none"> <li>(a) For minimum limits - Where measurement is on the limit or above the limit it is deemed to comply. Where measurement is below the limit it is deemed not to comply.</li> <li>(b) For maximum limits - Where measurement is on the limit or below the limit it is deemed to comply. Where measurement is above the limit it is deemed not to comply.</li> </ol> </li> <li>4. For reporting of results the estimated uncertainty for measurement taken into account (95%).</li> <li>5. This test report is based on assessment and tests applied to the specific test item(s) as submitted by the client.</li> <li>6. TÜV Rheinland Australia disclaims any and all responsibility or obligation for any other item.</li> <li>7. Model: KLE – 126S – 11L and Model: KLE – 126S – 19L are submitted for testing. For the models description/information, please refer to "Description of the test item" for details.</li> </ol>				
<b>Description of the test item:</b>				
<p>Trade name: <b>KAGA, INC</b>, LED type Street Luminaire, Model No.:<b>KLE – 126S – 19L</b>, Power Rating: AC 240V 50/60Hz, 0.12A, 25W. The main body was of metal construction, internally it housed, LED unit LM032A and inverter unit Model No.:LE202AN24-LP1-B Rating: 240V.</p> <p>Trade name: <b>KAGA, INC</b>, LED type Street Luminaire, Model No.:<b>KLE – 126S – 11L</b>, Power Rating: AC 240V 50/60Hz, 0.075A, 17W. The main body was of metal construction, internally it housed, LED unit LM032A and inverter unit Model No.:LE102AN24-LP1-B Rating: 240V.</p>				
<b>Options/accessories/ancillary equipment:</b>				
<p>The equipment was tested without any optional accessory installed. Hence, this report does not cover parameters that are influenced by the installation of optional accessory that might affect safety in the meaning of this standard.</p>				

<b>TABLE: Power Measurement</b>					
Test Item	Voltage (V)	Frequency (Hz)	Power measured (W)	Current measured (A)	Power Factor (PF)
Model KLE – 126S – 11L sample 1	220	50	16.61	0.0815	0.9244
	230	50	16.71	0.0790	0.9170
	240	50	16.76	0.0766	0.9110
Model KLE – 126S – 11L sample 2	220	50	16.60	0.0815	0.9210
	230	50	16.67	0.0793	0.9137
	240	50	16.77	0.0770	0.9070
Model KLE – 126S – 11L sample 3	220	50	16.67	0.0817	0.9230
	230	50	16.75	0.0795	0.9160
	240	50	16.81	0.0768	0.9088
Model KLE – 126S – 11L sample 4	220	50	16.63	0.0817	0.9240
	230	50	16.71	0.0790	0.9154
	240	50	16.77	0.0767	0.9087
Model KLE – 126S – 11L sample 5	220	50	17.21	0.0844	0.9251
	230	50	17.30	0.0820	0.9173
	240	50	17.32	0.0793	0.9098
Model KLE – 126S – 11L sample 6	220	50	16.45	0.0810	0.9203
	230	50	16.57	0.0786	0.9125
	240	50	16.65	0.0763	0.9055
Model KLE – 126S – 11L sample 7	220	50	17.43	0.0852	0.9273
	230	50	17.46	0.0821	0.9186
	240	50	17.57	0.0802	0.9123
Model KLE – 126S – 11L sample 8	220	50	16.89	0.0830	0.9241
	230	50	16.96	0.0804	0.9168
	240	50	17.05	0.0779	0.9090
Model KLE – 126S – 11L sample 9	220	50	16.65	0.0786	0.9125
	230	50	16.81	0.0768	0.9088
	240	50	17.04	0.0780	0.9091
Model KLE – 126S – 11L sample 10	220	50	16.77	0.0770	0.9070
	230	50	17.21	0.0844	0.9251
	240	50	17.43	0.0852	0.9273

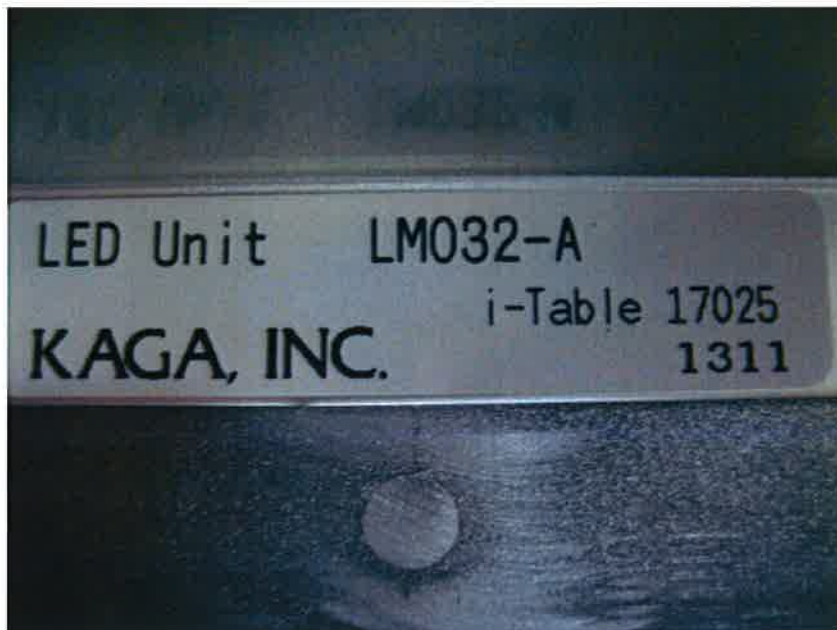
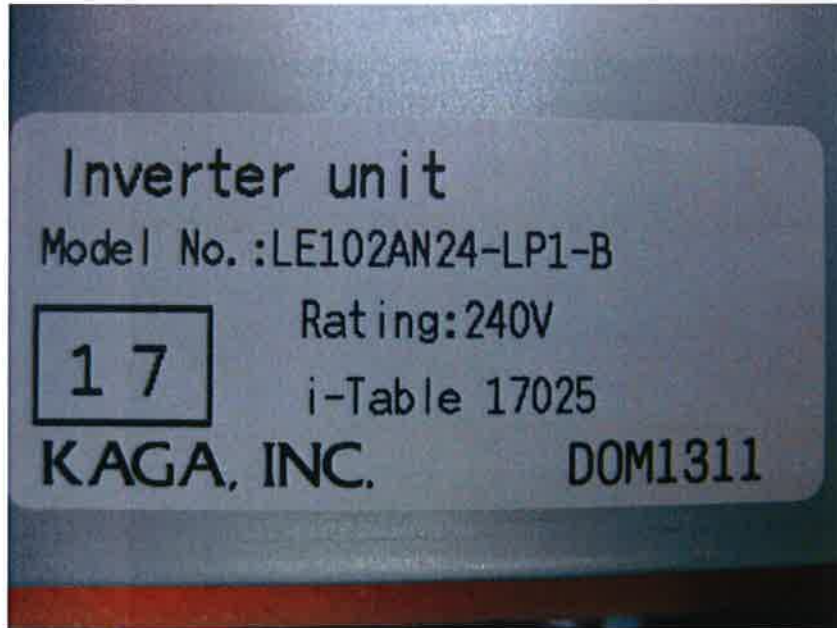
<b>TABLE: Power Measurement</b>					
Test Item	Voltage (V)	Frequency (Hz)	Power measured (W)	Current measured (A)	Power Factor (PF)
Model KLE – 126S – 19L sample 1	220	50	24.93	0.1223	0.9284
	230	50	25.08	0.1185	0.9190
	240	50	25.15	0.1149	0.9115
Model KLE – 126S – 19L sample 2	220	50	24.91	0.1223	0.9245
	230	50	25.02	0.1190	0.9110
	240	50	25.17	0.1155	0.9070
Model KLE – 126S – 19L sample 3	220	50	25.02	0.1226	0.9290
	230	50	25.14	0.1193	0.9260
	240	50	25.23	0.1152	0.9188
Model KLE – 126S – 19L sample 4	220	50	24.96	0.1226	0.9242
	230	50	25.08	0.1185	0.9155
	240	50	25.17	0.1151	0.9088
Model KLE – 126S – 19L sample 5	220	50	25.83	0.1266	0.9250
	230	50	25.96	0.1230	0.9172
	240	50	25.99	0.1189	0.9099
Model KLE – 126S – 19L sample 6	220	50	24.67	0.1215	0.9205
	230	50	24.85	0.1179	0.9126
	240	50	24.97	0.1144	0.9065
Model KLE – 126S – 19L sample 7	220	50	26.14	0.1278	0.9273
	230	50	26.19	0.1231	0.9187
	240	50	26.35	0.1203	0.9122
Model KLE – 126S – 19L sample 8	220	50	25.33	0.1245	0.9069
	230	50	25.44	0.1206	0.9251
	240	50	25.57	0.1168	0.9273
Model KLE – 126S – 19L sample 9	220	50	24.64	0.1183	0.9461
	230	50	24.72	0.1141	0.9400
	240	50	24.76	0.1185	0.9330
Model KLE – 126S – 19L sample 10	220	50	24.72	0.1187	0.9460
	230	50	24.80	0.1144	0.9401
	240	50	24.83	0.1108	0.9335

Rating Labels





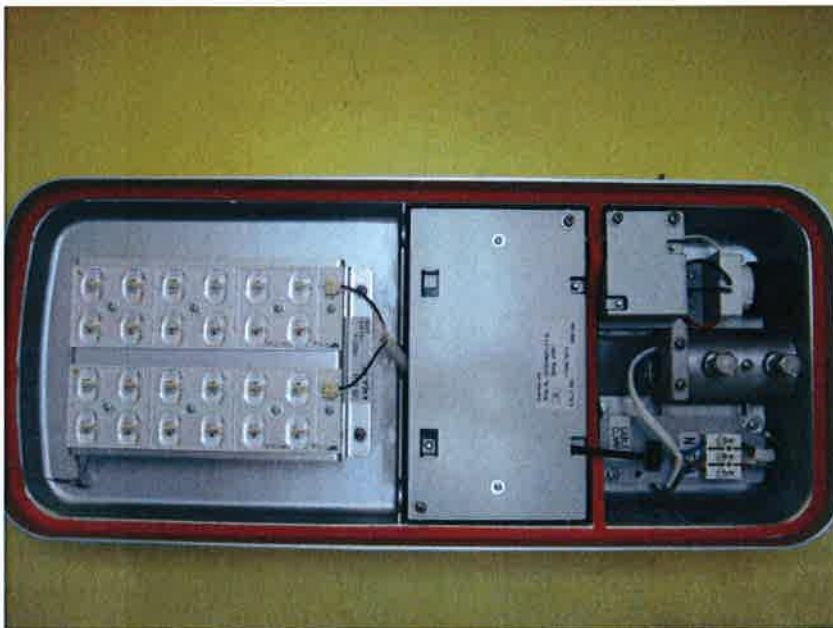




Photos



Model KLE - 126S - 19L - Top View



Model KLE - 126S - 19L - Internal View





Model KLE – 126S – 11L – Top View



Model KLE – 126S – 11L – Internal View

**End of report**

