

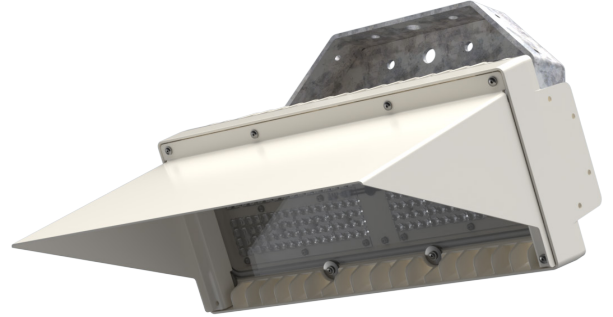


FL820 Area

TECHNICAL DATASHEET

FL820 LED Floodlighting System with Integral or remote drivers provides an innovative solution for area lighting.

The FL820 is a high output LED floodlight, which is designed for all types of area lighting, and may be used as a replacement for existing 1kW or 2kW floodlight systems. It is available as a single, twin or triple module with CSP (Chip Scale Package) LEDs.



This luminaire complies with ETL guidelines for White Light Emitting Diode Lighting Units and is eligible for the Enhanced Capital Allowance (ECA) scheme.

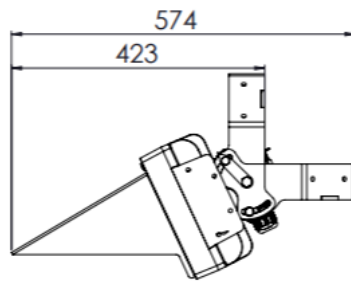
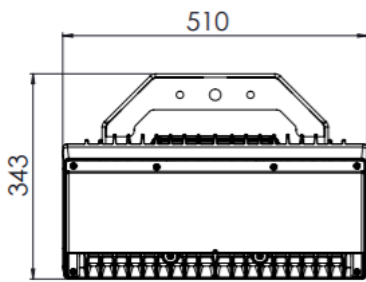
SPECIFICATION

Light Source	CSP chip scale package LED		
Number of LEDs	256 LEDs per module (2 x 128)		
Correlated Colour Temperature	3000K, 4000K, 5700K		
Colour Rendering Index	>70		
Optical Cover	Flat glass		
Max. Luminaire Efficacy at full power	137 lm/W		
Max. Luminaire Efficacy	154 lm/W		
Electrical Class	I		
Lumen Maintenance output	L90 @ 80,000 hours, Ta = 45°C L92 @ 100,000 hours, Ta = 25°C		
Driver Current	700mA, 850mA, 1050mA, 1200mA, 1400mA		
Operating Temperature	-40°C to +50°C		
Storage Temperature	-40°C to +85°C		
Installation Height	10 - 60m		
Material	Marine Grade Aluminium (LM6) Module, Aluminium cowl, Galvanised steel stirrup		
Finish	Aluminium parts polyester powder coated RAL 9010		
Ingress Protection	IP66		
Luminaire Tilt (on site)	-15° to +15°		
Product Configuration	FL820-1	FL820-2	FL820-3
Max. Luminaire Luminous Flux	70,260lm	140,532lm	210,798lm
Power Consumption	255-512W	510-1024W	765-1536W
Wind Area Side (FPA)	0.063m ²	0.132m ²	0.198m ²
Wind Area Front (FPA)	0.153m ²	0.202m ²	0.249m ²
Weight	13.9kg	24.7kg	37.3kg

Above data is for remote driver types

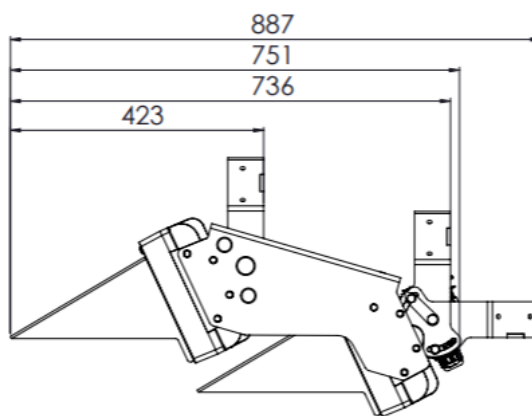
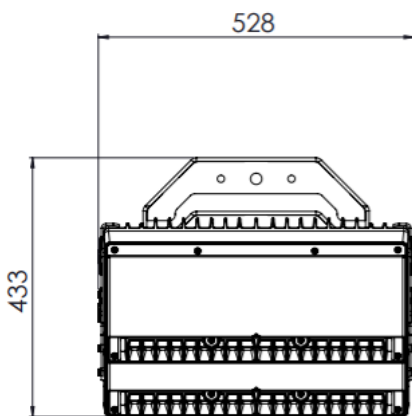
FL820 Area

TECHNICAL DATASHEET



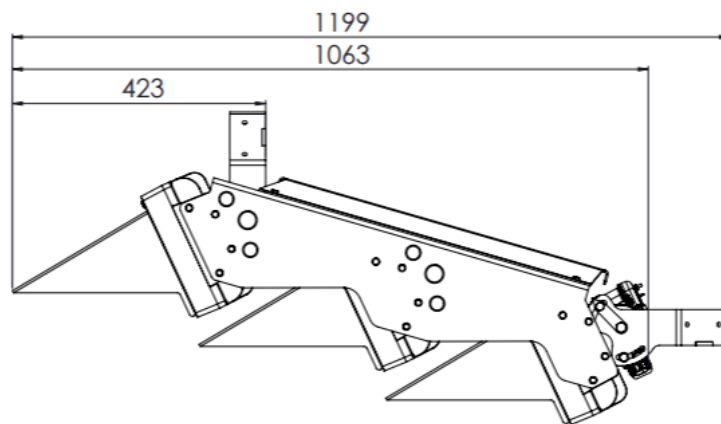
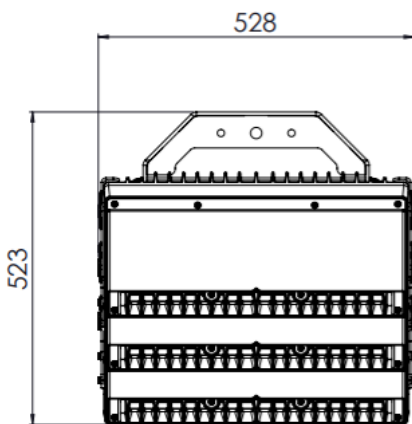
FL820-1

Two possible stirrup mounting options shown



FL820-2

Three possible stirrup mounting options shown



FL820-3

Two possible stirrup mounting options shown

Above data is for remote driver types