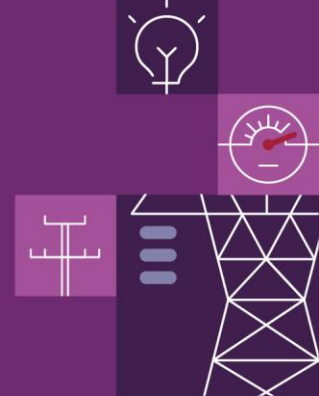


Frequency Contribution Factor Tuning Parameters and Input Sources



Purpose and scope

This document is an accompaniment to the Frequency Contribution Factors Procedure. It lists the latest tuning parameters and input sources for the frequency contribution factors, as per NER 3.15.6AA(j).

Review triggers

AEMO intends to continuously monitor the implementation of all frequency contribution factor tuning parameters and input sources. A review of tuning parameters and input sources will commence if any unintended consequences are identified.

Reviewable parameters and input sources

Parameters	Relevant section in the FCFP	Value	Effective date
Weight constant (Queensland)	3.1	0	8 June 2025
Weight constant (New South Wales)	3.1	0	8 June 2025
Weight constant (Victoria)	3.1	0	8 June 2025
Weight constant (South Australia)	3.1	0	8 June 2025
Weight constant (Tasmania)	3.1	0	8 June 2025
FM smoothing factor (α)	4.1	0.22222222 (2/9)	8 June 2025
Significance threshold for bad-quality or missing data points in raw frequency data	4.3	7 4-second intervals	8 June 2025
Significance threshold for the number of trading intervals within the historical performance period (HPP)	6.4	100 trading intervals	8 June 2025
Significance threshold for bad-quality or missing data points in unit MW output data	9.1	7 4-second intervals	8 June 2025
Significance threshold for the percentage of eligible units with appropriate metering in a region that have significant bad-quality data	9.2	50%	8 June 2025